

液晶之友 电话: 020-33819057
Http://www.lcdfriends.com

SPECIFICATION FOR LCD MODULE

Model No. TM128128CKFWG1

Prepared by:	Date:
Checked by :	Date:
Verified by :	Date:
Approved by:	Date:

TIANMA MICROELECTRONICS CO., LTD

REVISION RECORD

Date	Ver.	Ref. Page	Revision No.	Revision Items

1. General Specifications:

- 1.1 Display type: COLOR STN
- 1.2 Display color*¹:
 - Display color: 65K COLOR
 - Background*²: Black (Red, Green, Blue dots are off state)
- 1.3 Polarizer mode: Transmissive/Negative
- 1.4 Viewing Angle: 6:00
- 1.5 Driving Method: 1/128 Duty 1/5 Bias
- 1.6 Backlight Type: LED (3 LAMPS)
 - Backlight Color: WHITE
- 1.7 Controller: S6B33B0A03-BOCY
- 1.8 Data Transfer: SPI, 8 Bit Parallel or 16 Bit Parallel
- 1.9 Operating Temperature: -20----+70
 - Storage Temperature: -30----+80
- 1.10 Power Supply Voltage: VDD=3.0V
- 1.11 LCD Operating Voltage: VLCD=10.6V
- 1.12 Outline Dimensions: Refer to outline drawing on next page
- 1.13 Dot Matrix: 128 X 3 (RGB) X 128 Dots
- 1.14 Dot Size: 0.189(R+G+B) × 0.205(mm²)
- 1.15 Dot Pitch: 0.204 × 0.220 (mm²)
- 1.16 Weight: TBD*³

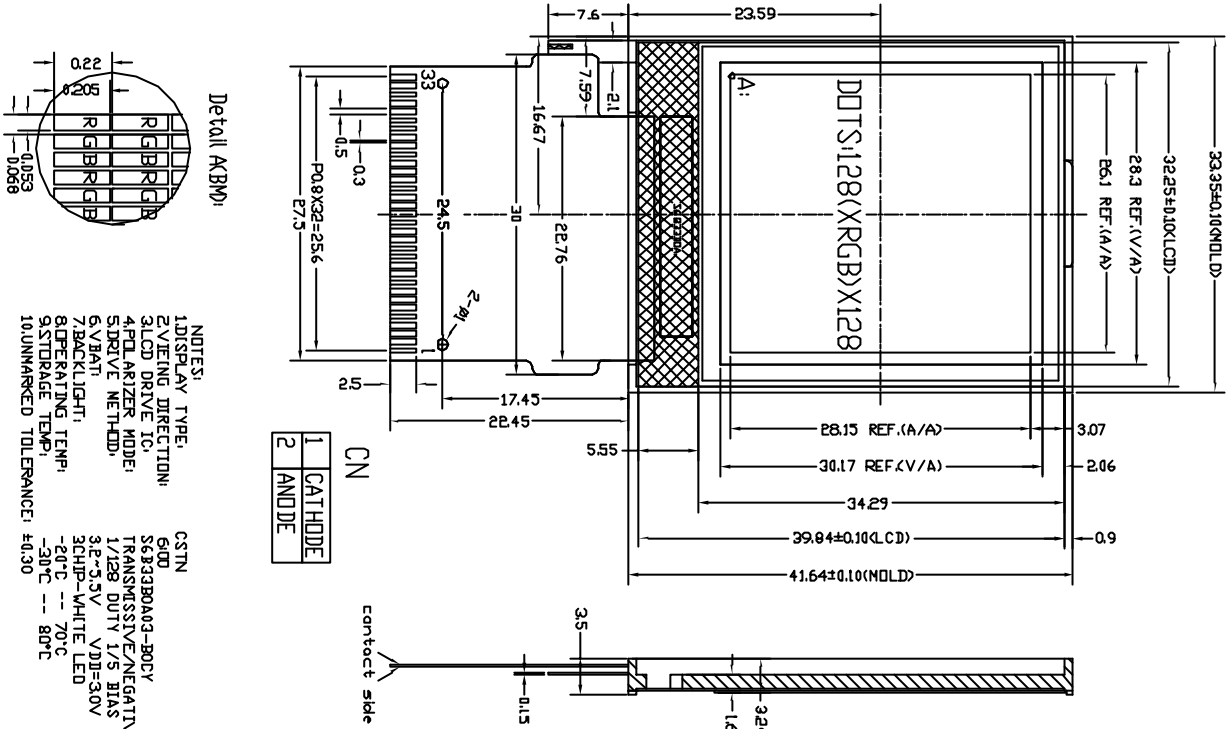
*¹ Color tone is slightly changed by temperature and driving voltage.

*² Color tone will be changed by backlight.

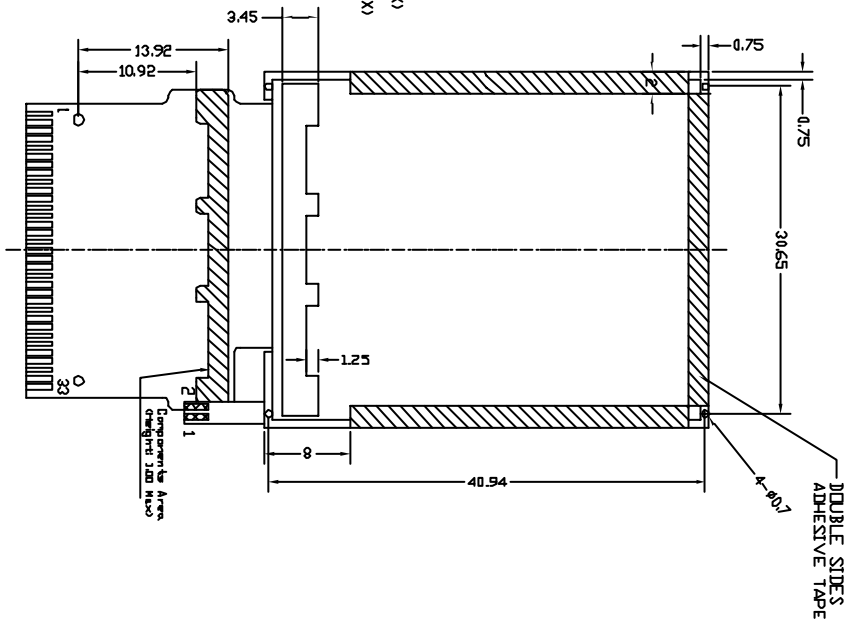
*³ TBD: To Be Determined.

2. Outline Drawing

No.	SYMBOL	PIN DESCRIPTION
1	NC	
2	NC	
3	PS	
4	MPU1	
5	MPU0	
6	CS1B	
7	RESETB	
8	RS	
9	WRB	
10	RDB	
11	D0	
12	D1	
13	D2	
14	D3	
15	D4	
16	D5	
17	D6	
18	D7	
19	D8	
20	D9	
21	D10	
22	D11	
23	D12	
24	D13	
25	D14	
26	D15	
27	VSS	
28	VDD	
29	VRN	
30	VRP	
31	NC	
32	NC	
33	NC	



- NOTES:
- 1 DISPLAY TYPE:
 - 2 VIEWING DIRECTION:
 - 3 LCD DRIVE IC:
 - 4 POLARIZED MODE:
 - 5 DRIVE METHOD:
 - 6 VBI:
 - 7 BACKLIGHT:
 - 8 OPERATING TEMP:
 - 9 STORAGE TEMP:
 - 10 UNMARKED TOLERANCE: ±0.30
- CSTN
- 56333B0A03-BODY
- TRANSMISSIVE/NEGATIVE
- 1/2ES DUTY 1/5 BIAS
- 3.2~3.3V VBI=3.0V
- 3CHP-WHITE LED
- 20°C -- 70°C
- 30°C -- 80°C

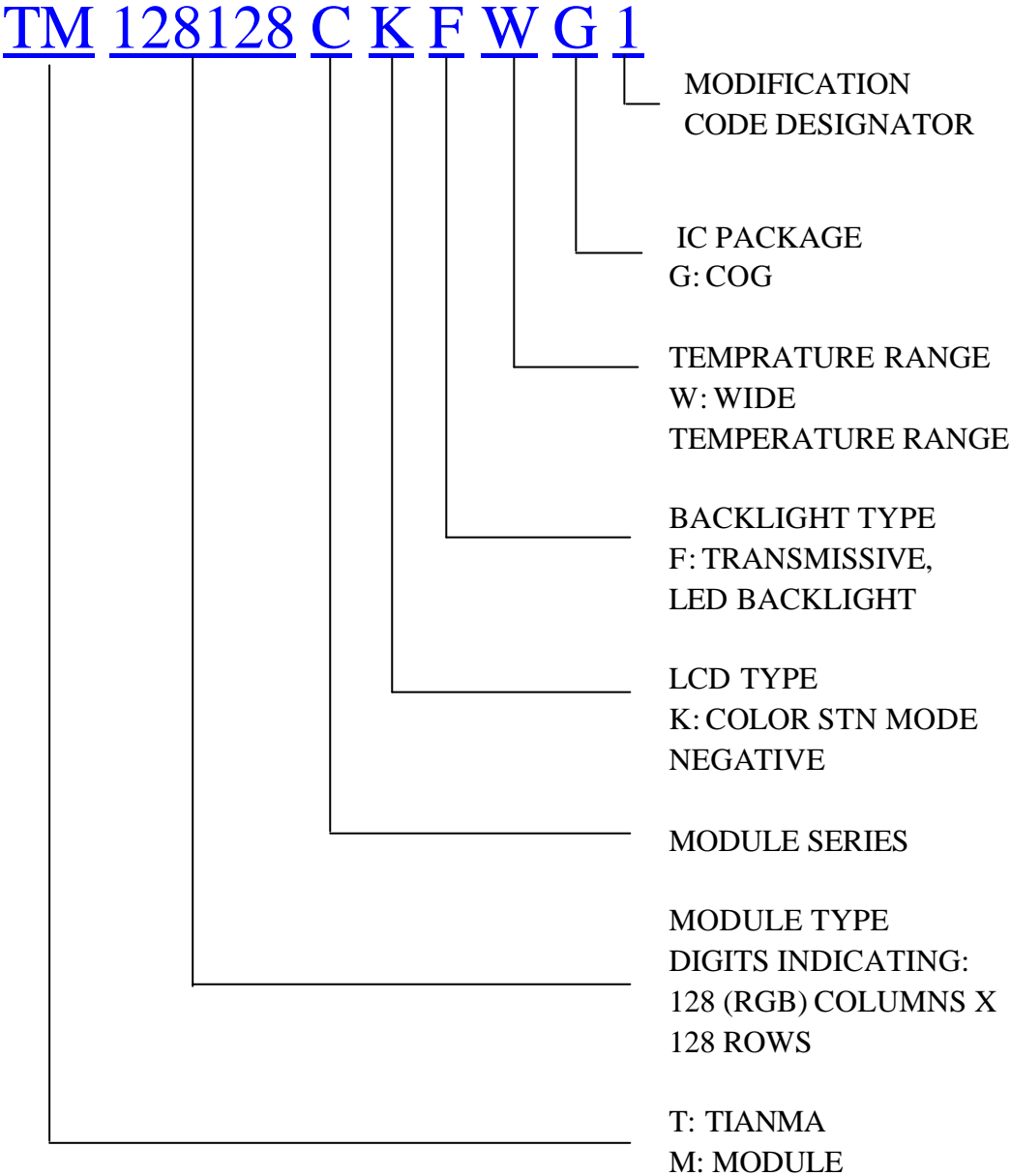


TIAN-MA MICROELECTRONICS CO.

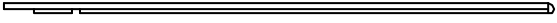
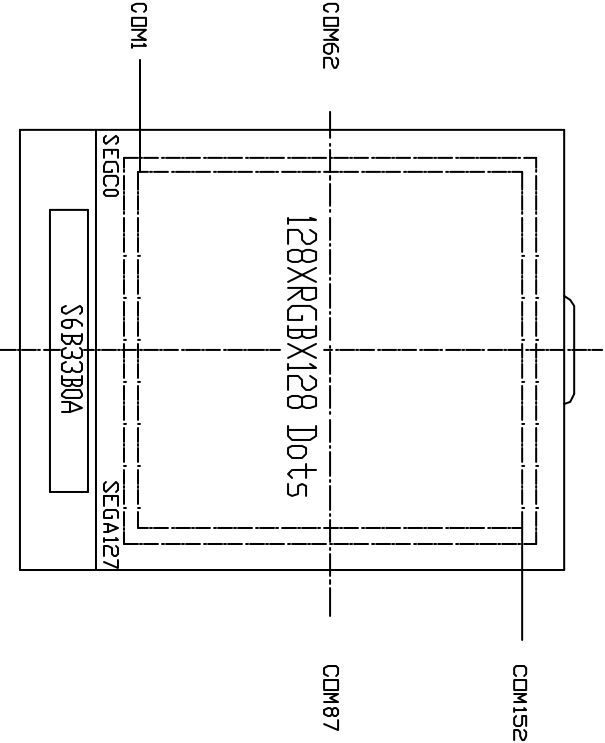
6/F., CASTLE Building, Shennan Road, Central, Shenzhen, China



DRAWN BY:	CHKD BY:	APPROVED BY:	CONFIRMED BY:
DATE:	DATE:	DATE:	DATE:
TITLE: TM128128CKF V/G1	SCALE:	UNIT: mm	REV: 1 OF 1
DWG NO: G-1			
DWG NAME: TM128128CKF V/G1			

3. LCD Module Part Numbering System



4. Circuit Block Diagram



 TAN-MA MICROELECTRONICS CO. 22/F, HANDBU Building, Sheppan Road, Central, Shenzhen, China.	
DRAWN BY:	TTTLP: TM128128CRG
CHECKED BY:	DWG NO: C-1
APPROVED BY:	DWG NAME: TM128128CRG C-1
	SCALE:  1:1
	DWG NO: 1 OF 1

5. Absolute Maximum Ratings

Ta=25

Item	Symbol	Min.	Max.	Unit	Remark
Power Supply Voltage	V _{DD} - V _{SS}	-0.3	+4.0	V	
LCD Driving Voltage	V _{LCD}	TBD	22		
Operating Temperature Range	T _{OP}	-20	+70		No Condensation
Storage Temperature Range	T _{ST}	-30	+80		

6. Electrical Specifications and Instruction Code

6.1 Electrical characteristics

$V_{SS}=0V$, $T_a=25$

Item	Symbol	Min.	Typ.	Max.	Unit
Supply Voltage (Logic)	$V_{DD}-V_{SS}$	+1.8	+3.0	+3.3	V
Supply Voltage (LCD Drive)	V_{LCD}	-	10.6	-	V
Input Signal Voltage	High V_{IH} ($V_{DD}=3.0$)	$0.8V_{DD}$	-	V_{DD}	V
	Low V_{IL} ($V_{DD}=3.0$)	0	-	$0.2 V_{DD}$	V
Supply current (Logic)	I_{DD} ($V_{DD}-V_{SS}=3.0V$)	-	-	2.5	mA
Operating current	I_{op}	-	-	20	mA
Oscillator frequency range	f_{osc}	84.48	-	288	KHz
Supply Voltage (LED)	V_{LED}	-	9.9	-	V
Supply current (LED)	I_{LED}		15.0	18.0	mA

6.2 Interface Signals

6.2.1 CN1

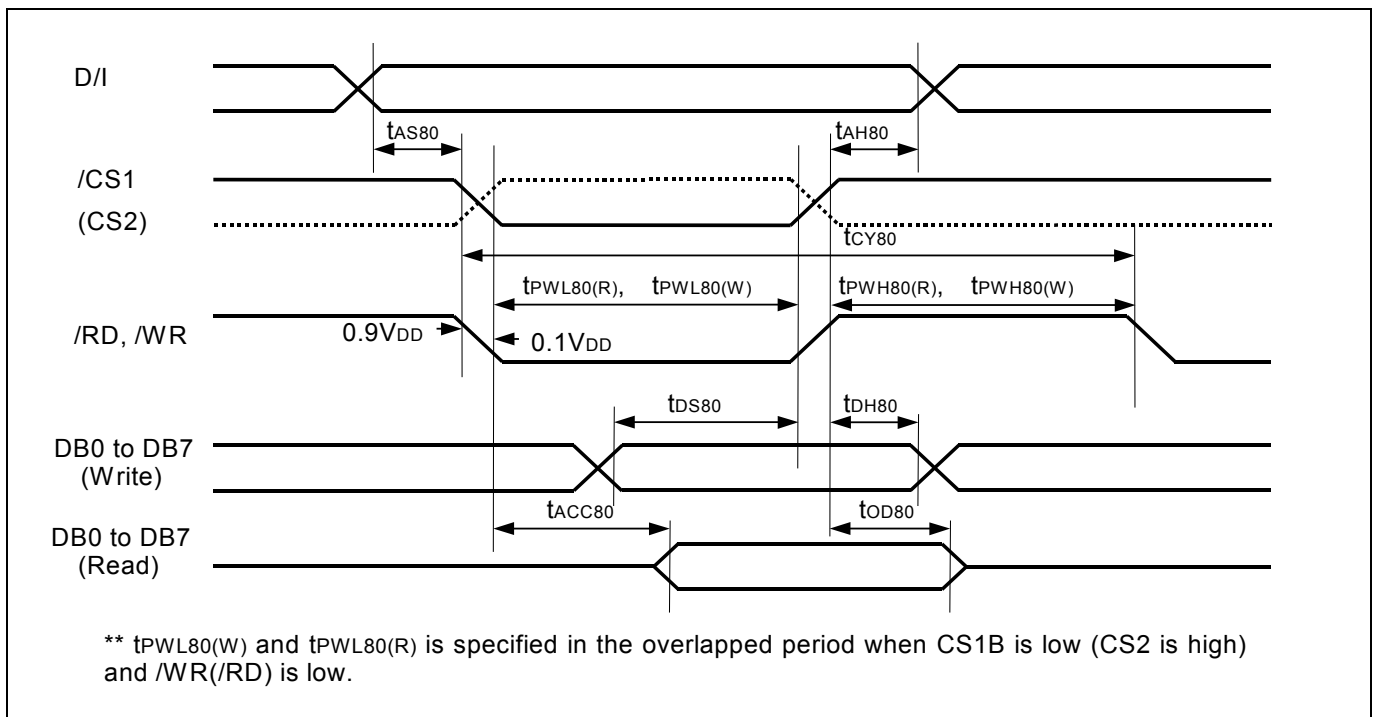
Pin No.	Symbol	Level	Description
1	NC		
2	NC		
3	PS	H/L	MPU interface select pin
4	MPU1	H/L	MPU interface select pin
5	MPU2	H/L	MPU interface select pin
6	CS1B	H/L	Chip select input pins (L: active)
7	RESETB	H/L	Reset pin: Low active
8	RS	H/L	Data / Instruction select input pin
9	WRB	H/L	Read / Write execution control pin
10	RDB	H/L	Read / Write execution control pin
11	D0	H/L	Data bus bit 0
12	D01	H/L	Data bus bit 1
13	D02	H/L	Data bus bit 2
14	D03	H/L	Data bus bit 3
15	D04	H/L	Data bus bit 4
16	D05	H/L	Data bus bit 5
17	D06	H/L	Data bus bit 6
18	D07	H/L	Data bus bit 7
19	D08	H/L	Data bus bit 8
20	D09	H/L	Data bus bit 9
21	D10	H/L	Data bus bit 10
22	D11	H/L	Data bus bit 11
23	D12	H/L	Data bus bit 12
24	D13	H/L	Data bus bit 13
25	D14	H/L	Data bus bit 14
26	D15	H/L	Data bus bit 15
27	VSS	0V	Ground

Pin No.	Symbol	Level	Description
28	VDD	3.0V	Logic circuit power supply
29	VRN		LCD common low selected driving voltage output pin
30	VRP		LCD common high selected driving voltage output pin
31	NC		
32	NC		
33	NC		

6.2.2 CN2

Pin No.	Symbol	Level	Description
C	CATHODE	0V	LED CATHODE
A	ANODE	9.9V	LED ANODE

6.3 Interface Timing Chart



Parallel Interface (8080-series MPU) Timing Diagram

6.4 Instruction code

Instruction Table

Instruction Name	D/I	WRB	RDB	DB15 ~DB8	DB7	DB6	DB5	DB4	DB3	DB2	DB1	DB0	Hex.	Parameter
Non Operation	0	0	1	*	0	0	0	0	0	0	0	0	00	
Oscillation Mode Set	0	0	1	*	0	0	0	0	0	0	1	0	02	1Byte
Driver Output Mode Set	0	0	1	*	0	0	0	1	0	0	0	0	10	1Byte
DC-DC Select	0	0	1	*	0	0	1	0	0	0	0	0	20	1Byte
Bias Set	0	0	1	*	0	0	1	0	0	0	1	0	22	1Byte
DCDC Clock Division Set	0	0	1	*	0	0	1	0	0	1	0	0	24	1Byte
DCDC and AMP ON/OFF set	0	0	1	*	0	0	1	0	0	1	1	0	26	1Byte
Temperature Compensation Set	0	0	1	*	0	0	1	0	1	0	0	0	28	1Byte
Contrast Control(1)	0	0	1	*	0	0	1	0	1	0	1	0	2A	1Byte
Contrast Control(2)	0	0	1	*	0	0	1	0	1	0	1	1	2B	1Byte
Standby Mode OFF	0	0	1	*	0	0	1	0	1	1	0	0	2C	-
Standby Mode ON	0	0	1	*	0	0	1	0	1	1	0	1	2D	-
DDRAM Burst Mode OFF	0	0	1	*	0	0	1	0	1	1	1	0	2E	-
DDRAM Burst Mode ON	0	0	1	*	0	0	1	0	1	1	1	1	2F	-
Addressing Mode Set	0	0	1	*	0	0	1	1	0	0	0	0	30	1Byte
ROW Vector Mode Set	0	0	1	*	0	0	1	1	0	0	1	0	32	1Byte
N-line Inversion Set	0	0	1	*	0	0	1	1	0	1	0	0	34	1Byte
Entry Mode Set	0	0	1	*	0	1	0	0	0	0	0	0	40	1Byte
X-address Area Set	0	0	1	*	0	1	0	0	0	0	1	0	42	2Byte
Y-address Area Set	0	0	1	*	0	1	0	0	0	0	1	1	43	2Byte
RAM Skip Area Set	0	0	1	*	0	1	0	0	0	1	0	1	45	1Byte
Display OFF	0	0	1	*	0	1	0	1	0	0	0	0	50	-
Display ON	0	0	1	*	0	1	0	1	0	0	0	1	51	-
Specified Display Pattern Set	0	0	1	*	0	1	0	1	0	0	1	1	53	1Byte
Partial Display Mode Set	0	0	1	*	0	1	0	1	0	1	0	1	55	1Byte
Partial Display Start Line Set	0	0	1	*	0	1	0	1	0	1	1	0	56	1Byte
Partial Display End Line Set	0	0	1	*	0	1	0	1	0	1	1	1	57	1Byte
Area Scroll Mode Set	0	0	1	*	0	1	0	1	1	0	0	1	59	4Byte
Scroll Start Line Set	0	0	1	*	0	1	0	1	1	0	1	0	5A	1Byte
Set Display Data Length	X	X	X	*	1	1	1	1	1	1	0	0	FC	1Byte
Display Data Write	1	0	1		Display Data Write							-	-	
Display Data Read	1	1	0		Display Data Read							-	-	
Status Read	0	1	0	0	Status Data Read							-	-	
Test Mode1	0	0	1	*	1	1	1	1	1	1	1	1	FF	-
Test Mode2	0	0	1	*	1	1	1	1	1	1	1	0	FE	-
Test Mode3	0	0	1	*	1	1	1	1	1	1	0	1	FD	-
Test Mode4	0	0	1	*	1	1	1	1	1	0	1	1	FB	-
Test Mode5	0	0	1	*	1	1	1	1	1	0	1	0	FA	-
Test Mode6	0	0	1	*	1	1	1	1	1	0	0	1	F9	-

*: Don't care

7. Optical Characteristics

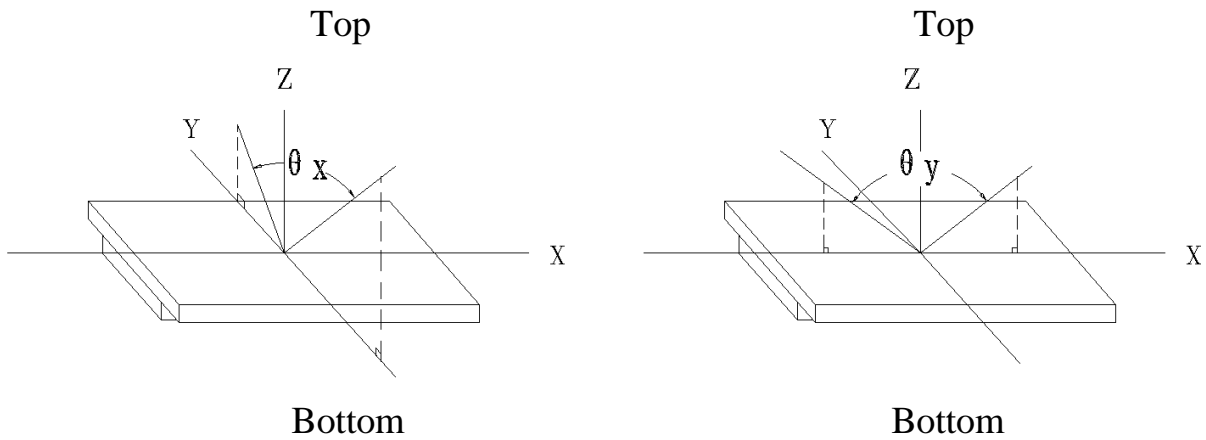
7.1 Optical Characteristics

V_{LCD}=10.6V Ta=25

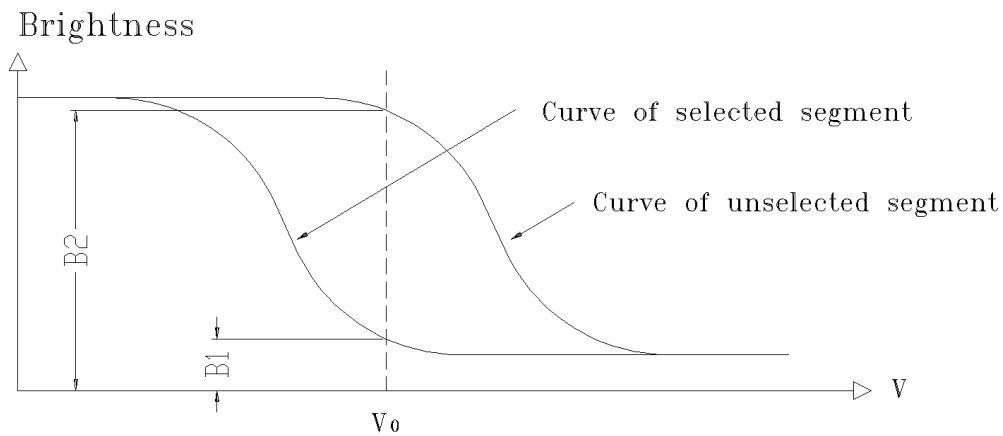
Item	Symbol	Condition	Min.	Typ.	Max.	Unit	
Viewing Angle	x	Cr=2	y=0 °	-40 -- +35		Deg	
	y			-30 -- +30			
Contrast Ratio	Cr	x=0 ° y=0 °	30	-	-		
Response Time	Turn on	T _{on}	x=0 ° y=0 °	-	-	200	ms
	Turn off	T _{off}		-	-	100	
Color Of CIE Coord-Inate	Red	x	x=0 ° y=0 °	-	0.43	-	cd/m ²
		y		-	0.35	-	
	Green	x	x=0 ° y=0 °	-	0.32	-	cd/m ²
		y		-	0.46	-	
	Blue	x	x=0 ° y=0 °	-	0.22	-	cd/m ²
		y		-	0.26	-	

7.2 Definition of Optical Characteristics

7.2.1 Definition of Viewing Angle



7.2.2 Definition of Contrast Ratio

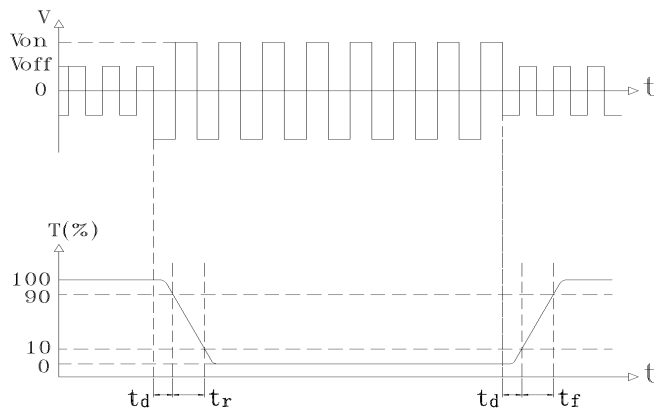


$$\text{Contrast Ratio} = B2/B1 = \frac{\text{unselected state brightness}}{\text{selected state brightness}}$$

Measuring Conditions:

- 1) Ambient Temperature: 25 ; 2) Frame frequency: 70.0Hz

7.2.3 Definition of Response time



Turn on time: $t_{on} = t_d + t_r$ Turn off time: $t_{off} = t_d + t_f$

Measuring Condition:

- 1) Operating Voltage: 10.6V 2) Frame frequency: 70.0Hz

7.3 Brightness Characteristic

Item	Symbol	Condition	Min.	Typ.	Max.	Unit
Brightness	Bp	Ta=25 ±3	80	-	-	cd/m ²
Uniformity	Bp	30-80%RH	70	-	-	%

Note:

1. The data is measured after LEDs are turned on for 5 minutes.
2. Testing conditions LED: V_{LED} = 9.9 V (DC)
 LCD: All dots are on (White color)
3. Brightness in the center of the LCD panel.
4. Definition of Uniformity (Bp)
 $Bp = Bp \text{ (Min.)} / Bp \text{ (Max.)} \times 100 \text{ (\%)}$
 Bp (Max.) = Maximum brightness in 9 measurement spots
 Bp (Min.) = Minimum brightness in 9 measurement spots

8. Reliability

8.1 Content of Reliability Test

Ta=25

No.	Test Item	Content of Test	Test condition
1	High Temperature Storage	Endurance test applying the high storage temperature for a long time	80 240H
2	Low Temperature Storage	Endurance test applying the low storage temperature for a long time	-30 240H
3	High Temperature Operation	Endurance test applying the electric stress (voltage & current) and the thermal stress to the element for a long time	70 240H
4	Low Temperature Operation	Endurance test applying the electric stress under low temperature for a long time	-20 240H
5	High Temperature /Humidity Storage	Endurance test applying the high temperature and high humidity storage for a long time	65 90%RH 240H
6	Temperature Cycle	Endurance test applying the low and high temperature cycle -40 25 85 25 30min 5min 30min 5min 1 cycle	-40 /85 10 cycles
7	Vibration Test (package state)	Endurance test applying the vibration during transportation	10Hz~150Hz, 100m/s ² , 120min
8	Shock Test (package state)	Endurance test applying the shock during transportation	Half- sine wave, 300m/s ² , 18ms
9	Atmospheric Pressure Test	Endurance test applying the atmospheric pressure during transportation by air	25kPa 16H

8.2 Failure Judgment Criterion

Criterion Item	Test Item No.									Failure Judgement Criterion	
	1	2	3	4	5	6	7	8	9		
Basic Specification	v	v	v	v	v	v	v	v	v	v	Out of the basic Specification
Electrical specification	v	v	v	v	v						Out of the electrical specification
Mechanical Specification							v	v			Out of the mechanical specification
Optical Characteristic	v	v	v	v	v	v				v	Out of the optical specification
Note	For test item refer to 8.1										
Remark	Basic specification = Optical specification + Mechanical specification										

9. Quality Level

Examination or Test	At $T_a=25$ (unless otherwise stated)	Inspection				
		Min.	Max.	Unit	IL	AQL
External Visual Inspection	Under normal illumination and eyesight condition, the distance between eyes and LCD is 25cm.	See Appendix A			II	Major 1.0 Minor 2.5
Display Defects	Under normal illumination and eyesight condition, display on inspection.	See Appendix B			II	Major 1.0 Minor 2.5
<p>Note: Major defects: Open segment or common, Short, Serious damages, Leakage Miner defects: Others Sampling standard conforms to GB2828</p>						

10. Precautions for Use of LCD Modules

10.1 Handling Precautions

10.1.1 The display panel is made of glass. Do not subject it to a mechanical shock by dropping it from a high place, etc.

10.1.2 If the display panel is damaged and the liquid crystal substance inside it leaks out, be sure not to get any in your mouth, if the substance comes into contact with your skin or clothes, promptly wash it off using soap and water.

10.1.3 Do not apply excessive force to the display surface or the adjoining areas since this may cause the color tone to vary.

10.1.4 The polarizer covering the display surface of the LCD module is soft and easily scratched. Handle this polarizer carefully.

10.1.5 If the display surface is contaminated, breathe on the surface and gently wipe it with a soft dry cloth. If still not completely clear, moisten cloth with one of the following solvents:

- Isopropyl alcohol
- Ethyl alcohol

Solvents other than those mentioned above may damage the polarizer. Especially, do not use the following:

- Water
- Ketone
- Aromatic solvents

10.1.6 Do not attempt to disassemble the LCD Module.

10.1.7 If the logic circuit power is off, do not apply the input signals.

10.1.8 To prevent destruction of the elements by static electricity, be careful to maintain an optimum work environment.

- a. Be sure to ground the body when handling the LCD Modules.
- b. Tools required for assembly, such as soldering irons, must be properly ground.
- c. To reduce the amount of static electricity generated, do not conduct assembly and other work under dry conditions.
- d. The LCD Module is coated with a film to protect the display surface. Be care when peeling off this protective film since static electricity may be generated.

10.2 Storage precautions

10.2.1 When storing the LCD modules, avoid exposure to direct sunlight or to the light of fluorescent lamps.

10.2.2 The LCD modules should be stored under the storage temperature range. If the LCD modules will be stored for a long time, the recommend condition is:

Temperature : 0 ~ 40

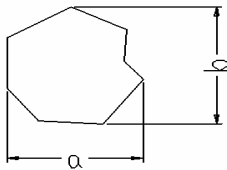
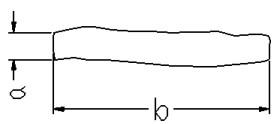
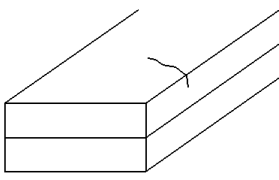
Relatively humidity: 80%

10.2.3 The LCD modules should be stored in the room without acid, alkali and harmful gas.

10.3 The LCD modules should be no falling and violent shocking during transportation, and also should avoid excessive press, water, damp and sunshine.

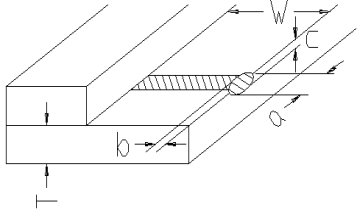
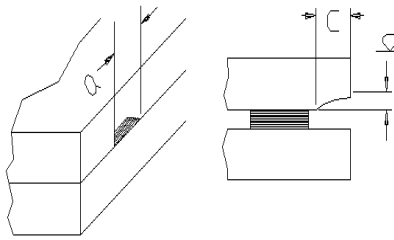
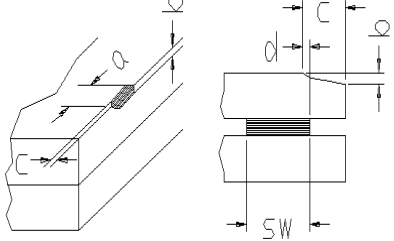
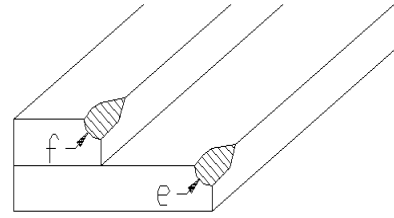
Appendix A

Inspection items and criteria for appearance defects

Items	Contents	Criteria		
Leakage		Not permitted		
Rainbow		According to the limit specimen		
Polarizer	Wrong polarizer attachment	Not permitted		
	Bubble between polarizer and glass	Not counted	Max. 3 defects allowed	
		$\phi < 0.3\text{mm}$	0.3mm ϕ 0.5mm	
	Scratches of polarizer	According to the limit specimen		
Black spot (in viewing area)		Not counted	Max. 3 spots allowed	Max. 3 spots (lines) allowed
		$X < 0.2\text{mm}$	0.2mm X 0.5mm	
		$X = (a+b)/2$		
Black line (in viewing area)		Not counted	Max. 3 lines allowed	
		$a < 0.02\text{mm}$	0.02mm a 0.05mm b 2.0mm	
Progressive cracks		Not permitted		

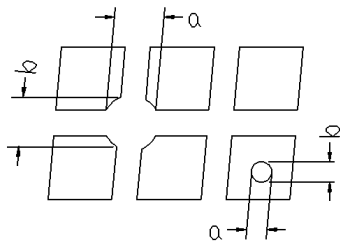
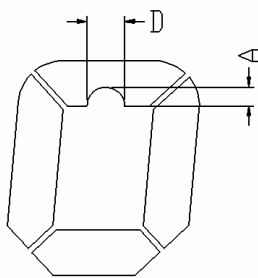
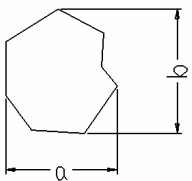
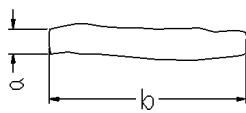
Appendix A

Inspection item and criteria for appearance defects (continued)

Items	Contents	Criteria							
Glass Cracks	Cracks on pads 	a	b	c	Max. 2 cracks allowed	Max. 5 cracks allowed			
		3mm	W/5	T/2					
		2mm	W/5	$T/2 < C < T$					
	Cracks on contact side 	a	b		Max. 2 cracks allowed				
		3mm	T/2						
		2mm	$T/2 < b < T$						
		C shall be not reach the seal area							
	Cracks on non-contact side 	a	b						
		3mm	T/2						
		2mm	$T/2 < b < T$						
	C 0.5mm								
	d SW/3								
Corner cracks 	$e < 2.0\text{mm}^2$ $f < 2.0\text{mm}^2$			Max. 3 cracks allowed					

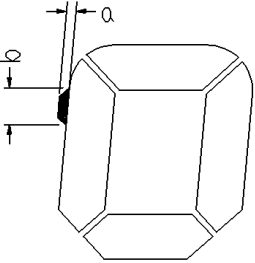
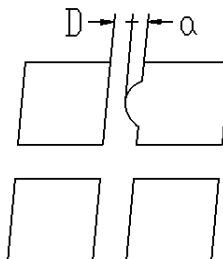
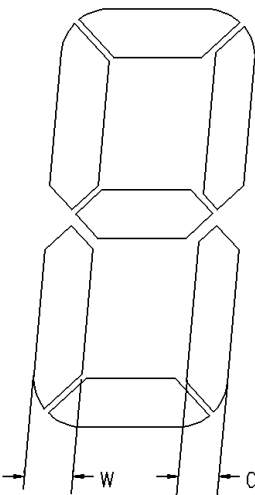
Appendix B

Inspection items and criteria for display defects

Items	Contents	Criteria		
Open segment or open common		Not permitted		
Short		Not permitted		
Wrong viewing angle		Not permitted		
Contrast ratio uneven		According to the limit specimen		
Crosstalk		According to the limit specimen		
Pin holes and cracks in segment (DOT)		Not counted	Max.3 dots allowed	Max.3 dots allowed
		$X < 0.1\text{mm}$	0.1mm X 0.2mm	
		$X = (a+b)/2$		
		Not counted	Max.2 dots allowed	
$A < 0.1\text{mm}$		0.1mm A 0.2mm $D < 0.25\text{mm}$		
Black spot (in viewing area)		Not counted	Max.3 spots allowed	Max.3 spots (lines) allowed
		$X < 0.1\text{mm}$	0.1mm X 0.2mm	
		$X = (a+b)/2$		
Black line (in viewing area)		Not counted	Max.3 lines allowed	
		$a < 0.02\text{mm}$	0.02mm a 0.05mm b 0.5mm	

Appendix B

Inspection items and criteria for display defects (continued)

Items	Content	Criteria						
Transformation of segment		Not counted	Max. 2 defects allowed	Max.3 defects allowed				
		$x < 0.1\text{mm}$	0.1mm x 0.2mm		Max.3 defects allowed			
		$x=(a+b)/2$				Max.3 defects allowed		
		Not counted	Max. 1 defects allowed				Max.3 defects allowed	
		$a < 0.1\text{mm}$	0.1mm a 0.2mm $D > 0$					Max.3 defects allowed
	Max.2 defects allowed							
	$0.8W \leq a \leq 1.2W$							
$a = \text{measured value of width}$		$W = \text{nominal value of width}$						